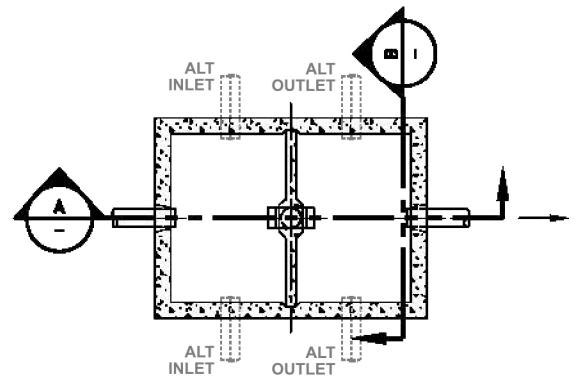
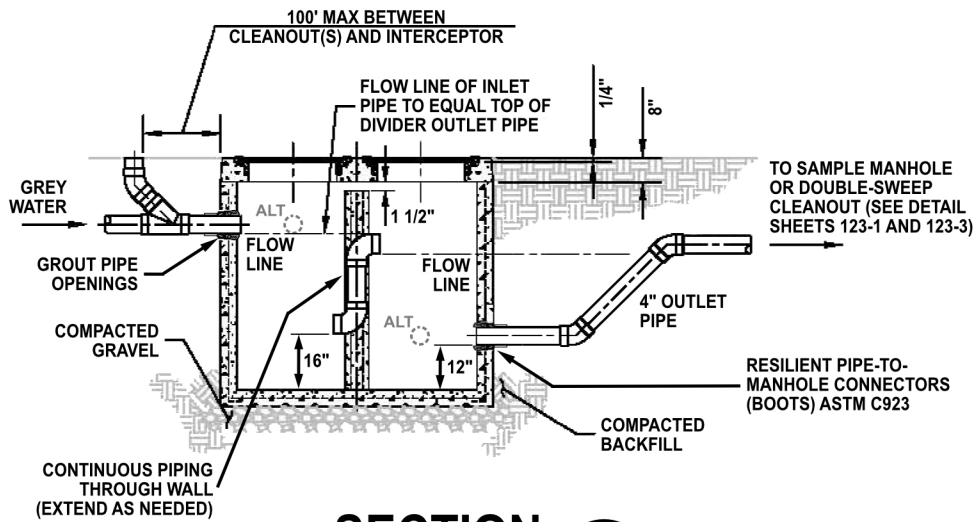


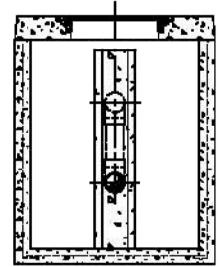
**INTERCEPTOR LID PLAN**



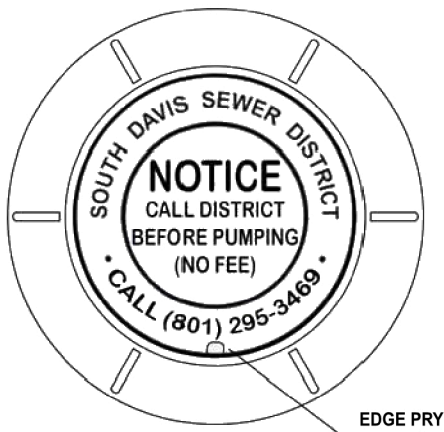
**INTERCEPTOR PLAN**



**SECTION A**



**SECTION B**



**"NOTICE" COVER**

**NOTES:**

- 1 - INTERCEPTOR CAPACITY - 1,000 GAL MIN.
- 2 - INTERCEPTORS SHALL BE PRECAST ONLY AND SHALL BE MANUFACTURED IN ACCORDANCE WITH ASTM C1613. INTERCEPTORS SHALL NOT BE POURED IN PLACE.
- 3 - INTERCEPTOR LID SHALL BE DESIGNED FOR H-20 HIGHWAY LOADING.
- 4 - INTERCEPTOR LOCATION REQUIRES DISTRICT APPROVAL.
- 5 - INTERCEPTORS ARE TO BE EASILY ACCESSIBLE FOR CLEANING BY THE USER AND FOR INSPECTION BY THE DISTRICT.
- 6 - INTERCEPTORS ARE TO BE LOCATED TO PREVENT SURFACE WATER FROM ENTERING COVERS.
- 7 - A 12" MINIMUM BASE OF WELL-GRADED GRAVEL (1"-MINUS) IS TO BE PLACED AND COMPACTED TO SUPPORT THE INTERCEPTOR. 2" GRADED GRAVEL MAY BE REQUIRED WHERE BASE MATERIAL IS UNSTABLE. INSPECTION OF THE COMPACTED GRAVEL IS REQUIRED BY THE DISTRICT INSPECTOR PRIOR TO PLACEMENT OF INTERCEPTOR.
- 8 - ALL INLET AND OUTLET PIPES REQUIRE RESILIENT PIPE-TO-MANHOLE CONNECTORS (BOOTS) AND SHALL BE GROUTED (SEE DETAIL SHEET 114-3).
- 9 - INTERCEPTOR LID SHOULD BE FITTED WITH ONE "SOUTH DAVIS SEWER DISTRICT" COVER (SEE DETAIL SHEET 114-5) AND ONE "NOTICE" COVER (DETAIL SHEET 123-2).

SCALE: NONE

ORIGINAL	
04/08/2019	LBH
REVISIONS	
03/12/2025	LBH
10/14/2025	LBH

**SOUTH DAVIS SEWER DISTRICT**  
**GRAVITY GREASE INTERCEPTOR**  
**DETAIL**



SHEET:

**123-2**